

15TH DRESDEN SYMPOSIUM ON AUTOANTIBODIES

Autoimmunity in the SARS-CoV-2 Era
Dresden, September 07-10, 2021

**6th International Consensus on ANA Pattern (ICAP) Workshop
and Workshop on Harmonization of Autoantibody Detection**

September 06, 2021

Dresden Fair (Messe Dresden), Messering 6, Portal (Tor) 3, 01067 Dresden



Final Programme

The modern Dresden Fair and the historical Stock Market Dresden: congress venue of the 15th Dresden Symposium on Autoantibodies.



WELCOME

Dear Colleagues,

On behalf of the Organizing Committee, it is a great pleasure to welcome you to our 15th Dresden Symposium on Autoantibodies. The symposium is organized by the Institute of Immunology of the Medical Faculty of the Technical University Dresden in cooperation with the Society for the Advancement of Immunodiagnosics (www.gfid-ev.de) and the Immunodiagnosics Department of the German Society for Clinical Chemistry and Laboratory Medicine (www.dgkl.de).

In 2019, when we said goodbye in the past symposium, we would never have imagined how our lives were about to change in the following two years by the SARS-CoV-2 pandemic. Thus, it is only natural that our anniversary event 2021 focuses on the SARS-CoV-2 pandemic. Especially the role of autoantibodies in severe manifestations of COVID-19 and after immunization with adenoviral vector-based vaccines against SARS-CoV-2 will be discussed. Other key topics of this year's symposium are novel autoantibodies and autoantibody profiling in rheumatoid arthritis and other systemic autoimmune diseases, autoantibodies in the disease criteria for systemic autoimmune diseases, autoimmunity in neurologic and psychiatric disorders as well as autoimmune serology in clinical practice. Furthermore, we are delighted to host the 6th International Consensus on ANA Pattern (ICAP) Workshop and a special workshop on harmonization of autoantibody detection as pre-congress events.

It has been a lot of hard work to organize a safe on-site symposium in pandemic times but we were encouraged by the request of numerous colleagues for personal meetings and scientific discussions, which can be replaced only to a limited extent by virtual events. We would like to express our sincere thanks to the Co-chairs and the members of the International Advisory Board for the invaluable support in the preparation of the symposium and for the willingness to travel to Dresden in these difficult times!

We would kindly ask your understanding for all necessary protection and hygiene measures, service limitations as well as distance regulations.

We expect that our 15th Dresden Symposium on Autoantibodies as well as the ICAP and harmonization of autoantibody detection workshops will stimulate a broad debate on how the new achievements from the bench work could help to improve diagnostics and therapy of autoimmune diseases.

Enjoy the scientific program and your stay at Dresden!

Karsten Conrad
On behalf of the Organizing Committee

PROGRAMME

6th International Consensus on ANA Pattern (ICAP) Workshop

Co-Chairs: Edward K.L. Chan (Gainesville, USA)
Luis E.C. Andrade (São Paulo, Brazil)

10.30-12.30

6th ICAP WORKSHOP PART I

10.30-10.45

Welcome and agenda
Edward K.L. Chan (Gainesville, USA)

10.45-11.00

International Consensus on ANA pattern (ICAP) in 2021: Status and Future Directions
Edward K.L. Chan (Gainesville, USA)

11.00-11.20

World panoramic survey on HEp-2 IFA patterns
Luis E.C. Andrade, Trischna Martins (São Paulo, Brazil)

11.20-11.40

Current laboratory and clinical practices in reporting and interpreting anti-nuclear antibody indirect immunofluorescence (ANA IIF) patterns: results of an international survey
Lieve van Hoovels (Aalst, Belgium)

11.40-12.00

Experience with ICAP's recommendations in Austria
Werner Klotz, Wilson de Melo Cruvinel, Manfred Herold (Innsbruck, Austria)

12.00-12.15

Translating and implementing of ICAP in Bosnia and Herzegovina
Emir Hondo, Nejra Džananović, Amir Fazlagić, Amira Ćerimagić (Sarajevo, Bosnia-Herzegovina)

12.15-12.30

Improvement of decision trees for routine diagnostics and research
Maria Infantino (Florence, Italy)

12.30-13.20

LUNCH BREAK

13.20-15.10

6th ICAP WORKSHOP PART II

13.20-13.40

Biological and technical aspects of the heterogeneity in HEp-2 IFA results in substrates from different sources
Monica de Jesus, Luis E.C. Andrade (São Paulo, Brazil)

An international survey on methodological aspects of ANA testing by indirect immunofluorescence analysis: current practices for method verification
13.40-14.00
Martine Vercammen, C. Bonroy, S. Broeders, L. Andrade, N. Bizzaro, D. Bogdanos, E.K. Chan, W. Coucke, J. Damoiseaux, W. de Melo Cruvine, A. Kozmar, L. Kuhl, L. Lutteri, M.J. Rego de Sousa, S. Schouwers, L. Van Hoovels, X. Bossuyt (Brugge, Belgium)

How to report rare and mixed pattern?
14.00-14.20
Manfred Herold (Innsbruck, Austria)

Artificial intelligence for pattern recognition according to ICAP by automatic IFA systems
14.20-14.40
Rico Hiemann (Senftenberg, Germany)

Discussion - Questions from ICAP users
14.40-15.00
Edward K.L. Chan (Gainesville, USA)

COFFEE BREAK
15.00-15.30

Harmonization of Autoantibody Detection

Co-Chairs: Ulrich Sack (Leipzig, Germany)
Martin Blüthner (Karlsruhe, Germany)

Harmonization in autoimmune serology
15.30-16.00
Xavier Bossuyt (Leuven, Belgium)

Quality aspects of autoimmune diagnostics
16.00-16.30
Ulrich Sack (Leipzig, Germany)

Practical issues of dsDNA-antibody detection in laboratory diagnostics and proficiency testing: a ride between Scylla and Charybdis
16.30-16.45
Martin Blüthner (Karlsruhe, Germany)

Performance of an indirect immunofluorescence commercial assay for the detection of anti-neuronal antibodies: a prospective study.
16.45-17.00
David Goncalves, V. Rogemond, S. Closs, A.K. Pinto, G. Picard, N. Fabien, J. Honnorat (Lyon, France)

Immune cell-subset flow cytometric analysis, autoantibody diagnostic and theranostic testing superiority compared to autoantibody testing alone: from the bench to the clinic
17.00-17.30
Dimitrios Bogdanos, Athanasios Mavropoulos (Larissa, Greece)

TUESDAY
SEPTEMBER 07

08.00-22.00

Registration

10.00-10.30

Welcome and Introduction

Autoantibodies in COVID-19 - An Introduction
Karsten Conrad (Dresden, Germany)

10.30-12.00

Plenary Lectures

10.30-11.00

The SARS-CoV-2 as an instrumental trigger of autoimmunity
Arad Dotan & Yehuda Shoenfeld (Tel Hashomer, Israel)

11.00-11.30

Overview of autoantibodies and complementary biomarkers related to SARS-CoV2
Marvin J. Fritzler (Calgary, Canada)

11.30-12.00

Innate immunity in COVID-19: useful biomarkers for the clinical management
Pier Luigi Meroni (Milan, Italy)

12.00-13.30

LUNCH BREAK – POSTER AND EXHIBITION VIEWING

12.00-13.30

Posters A1 – A23: Guided poster presentation of selected posters (Autoantibodies in systemic autoimmune diseases) chaired by Ulrich Sack (Leipzig, Germany)

13.30-15.20

AUTOANTIBODIES IN SARS-COV-2 INFECTION AND VACCINATION

Co-Chairs: Yehuda Shoenfeld (Tel Aviv, Israel)
Nils Landegren (Uppsala, Sweden)

13.30-13.55

Molecular mimicry between SARS-CoV-2 and human auto-antigens: implications for virus-triggered and vaccine-induced autoantibodies
Dimitrios Bogdanos (Larissa, Greece)

13.55-14.20

Autoantibodies in Kawasaki disease-like multisystem inflammatory syndrome in children (MIS-C) with COVID-19
Nils Landegren (Uppsala, Sweden)

14.20-14.35

Long-term assessment of autoantibodies in COVID-19
Luis E.C. Andrade (São Paulo, Brazil)

14.35-14.50

Autoantibody requesting during the COVID-19 pandemic
Maria Infantino (Florence, Italy)

Anti-prothrombin autoantibodies enriched after infection with SARS-CoV-2 and influenced by strength of antibody response against SARS-CoV-2 proteins
Marc Emmenegger, Sreedhar Saseendran Kumar, Vishalini Emmenegger, Thomas Büttner, Peter Schierack, Martin F. Sprinzl, Clemens J. Sommer, Karl J. Lackner, Adriano Aguzzi, Dirk Roggenbuck, Katrin B.M. Frauenknecht (Senftenberg, Germany)

14.50-15.05

Autoantibody signatures in SARS-CoV-2 infected individuals
Kirsten Heiss, Renate Sekul, Fiordiligie Casilag, Volker Stadler (Heidelberg, Germany)

15.05-15.20

COFFEE BREAK

15.20-16.00

AUTOIMMUNE SEROLOGY OF NEUROLOGICAL DISEASES
(sponsored by EUOIMMUN Medizinische Labordiagnostika AG)

16.00-18.00

Co-Chairs: Andrew McKeon (Rochester, USA)
Harald Prüß (Berlin, Germany)

Autoimmune movement disorders
Andrew McKeon (Rochester, USA)

16.00-16.30

Autoimmune encephalitis and dementia – new disease concepts
Harald Prüß (Berlin, Germany)

16.30-17.00

Identification and interpretation: challenges with neural antibodies
Christian G. Bien (Bielefeld, Germany)

17.00-17.20

Artificial Intelligence: automated immunofluorescence pattern recognition 2.0
Jens Krauth (Lübeck, Germany)

17.20-17.40

Detection methods and strategies for novel neuronal autoantibodies
Lars Komorowski (Lübeck, Germany)

17.40-18.00

WELCOME RECEPTION with traditional and vegetarian Barbecue IN THE INDUSTRIAL EXHIBITION - POSTER AND EXHIBITION VIEWING

18.00-22.00

08.30-10.30

AUTOANTIBODY PROFILING IN SYSTEMIC AUTOIMMUNE RHEUMATIC DISEASES

(sponsored by Werfen)

Co-Chairs: Michael Mahler (San Diego, USA)
Laura Martinez Prat (Barcelona, Spain)

08.30-09.10

Profiling of antibodies as an aid in the diagnosis of ANA associated rheumatic diseases (AARD) measured using a novel particle-based multi-analyte technology
Michael Mahler (San Diego, USA)

09.10-09.30

Autoantibody profiling as an aid in the prediction of ANA associated rheumatic diseases (AARD)
Savino Sciascia (Turin, Italy)

09.30-09.50

Multi-center evaluation of myositis specific antibodies measured using a novel particle based multi-analyte technology
Marvin J. Fritzler (Calgary (Canada)

09.50-10.10

Anti-PAD antibodies in the serology of rheumatoid arthritis
Laura Martinez Prat (Barcelona, Spain)

10.10-10.30

Q&A

10.30-11.00

COFFEE BREAK - POSTER AND EXHIBITION VIEWING

11.00-12.15

AUTOANTIBODIES IN PATIENTS WITH NEUROLOGIC MANIFESTATIONS OF COVID-19

Co-Chairs: Dirk Reinhold (Magdeburg, Germany)
Dominique Endres (Freiburg, Germany)

11.00-11.30

Anti-GPCR antibodies in ME-CSF and Long Covid Syndrome
Carmen Scheibenbogen (Berlin, Germany)

11.30-12.00

Cerebrospinal fluid autoantibodies in COVID-19 patients with neurological symptoms
Harald Pruß (Berlin, Germany)

12.00-12.15

Neuronal antibodies in the serum and CSF of COVID-19 patients
Peter Kortvelyessy, Winfried Stocker, Bianca Teegen, Klemens Ruprecht, Christian Meisel, Helena Radbruch, Dirk Reinhold (Berlin, Germany)

12.15-14.00

LUNCH BREAK – POSTER AND EXHIBITION VIEWING

12.15-14.00

Posters B1 – B15: Guided poster presentation of selected posters of the Candidates for the Dresden Prize chaired by Dirk Reinhold (Magdeburg, Germany)

EASI FORUM MEETING (EASI members only)

Location: Meeting room

12.30-14.00

**NOVEL AUTOANTIBODIES AND AUTOANTIBODY PROFILING
IN RHEUMATOID ARTHRITIS**

14.00-15.30

Co-Chairs: Günter Steiner (Vienna, Austria)
Johan Rönnelid (Uppsala, Sweden)

Anti-modified protein antibodies (AMPA) in Rheumatoid Arthritis
Rene E.M. Toes (Leiden, The Netherlands)

14.00-14.30

Anti-acetylated peptide antibodies (AAPA): Diagnostic and
prognostic value
Günter Steiner (Vienna, Austria)

14.30-14.50

ACPA multiplexing in RA: Diagnostic and prognostic value
Johan Rönnelid (Uppsala, Sweden)

14.50-15.10

Three novel autoantibodies for Rheumatoid Arthritis characterise
50% of seropositive patients
*Klemens Vierlinger, Lisa Milchram, Ulrike Kegler, Daniela Sieghart,
Anela Tosevska, Günter Steiner, Stephan Blüml,
Andreas Weinhäusel (Vienna, Austria)*

15.10-15.30

COFFEE BREAK

15.30-16.00

**AUTOIMMUNITY IN NEUROLOGIC AND PSYCHIATRIC
DISORDERS**

16.00-18.20

Co-Chairs: Harald Prüß (Berlin, Germany)
Christian P. Moritz (Lyon, France)

Autoantibodies of the autonomic nervous system
Yehuda Shoenfeld and Gilad Halpert (Tel Aviv, Israel)

16.00-16.35

Rising from the Death Valley of autoantibody candidates:
Argonaute autoantibodies as dysimmune biomarkers in peripheral
neuropathies
Christian P. Moritz (Lyon, France)

16.35-16.55

Novel anti-CNS autoantibodies in the cerebrospinal fluid of
patient with psychosis
Dominique Endres (Freiburg, Germany)

16.55-17.15

Emerging new categories of psychiatric disorders caused by or
related to mild neuroinflammation
Karl Bechter (Ulm/Günzburg, Germany)

17.15-17.35

- 17.35-17.50 Ataxia with anti-DNER antibodies: from immunological characterization to new clinical insights
Elise Peter, Le-Duy Do, Salem Hannoun, Sergio Muñoz-Castrillo, Anne-Laurie Pinto, Naura Chounlamountri, Véronique Rogemond, Géraldine Picard, François Cotton, Alexandra Traverse-Glehen, Virginie Desestret, Jérôme Honnorat, Bastien Joubert (Lyon, France)
- 17.50-18.05 Nation-wide survey on autoantibodies related to autoimmune encephalitis in Brazil – interesting data from hundreds of patients across the country
Livia Dutra, Luis E.C. Andrade (São Paulo, Brazil)
- 18.05-18.20 Slow disease progression and clinical heterogeneity make anti-CASPR2 encephalitis a diagnostic challenge
Jeanne Benoît, Sergio Muñoz-Castrillo, Anne-Laurie Pinto, Géraldine Picard, Véronique Rogemond, Jérôme Honnorat, Bastien Joubert (Lyon, France)
- 18.40 **Departure by shuttle bus from the congress venue to the Social Dinner venue**
- 19.00-22.00** **Social Dinner in the Johanneum Palais (Dresden Transport Museum)** at the Neumarkt Dresden, Augustusstrasse 1.

NOVEL AUTOANTIGENIC TARGETS AND EMERGING TECHNOLOGIES FOR AUTOANTIBODY DETECTION

(sponsored by GA Generic Assays GmbH)

Co-Chairs: Dirk Roggenbuck (Dahlewitz, Germany)
Dimitrios Bogdanos (Larissa, Greece)

08.30-10.30

Long-lasting unique autoantibody responses in convalescents after recovering from mildly experienced SARS-CoV-2 infections
Holger Lingel (Magdeburg, Germany)

08.30-08.45

A step-wise approach for autoantibody testing of patients with CPKemia, interstitial lung disease, pulmonary fibrosis or myositis: a single center experience on over 1200 patients
Dimitrios Bogdanos (Larissa, Greece)

08.45-09.00

Automated ANA pattern recognition according to ICAP nomenclature - challenges for artificial intelligence
Rico Hiemann (Senftenberg, Germany)

09.00-09.15

IFA automation for small autoimmune laboratories based on artificial intelligence
Werner Klotz, Rico Hiemann, Jonas Noack, Peter Schierack, Dirk Roggenbuck, Manfred Herold (Innsbruck, Austria)

09.15-09.30

Anti-glycoprotein 2 IgA and PR3-ANCA: antibodies to predict severe disease, poor survival and cholangiocarcinoma in primary sclerosing cholangitis
Ewa Wunsch (Szczecin, Poland)

09.30-09.45

PR3-ANCA detected by sensitive ELISA predicts poor survival and correlates with Mayo risk score in primary sclerosing cholangitis
Mandy Sowa (Senftenberg, Germany)

09.45-10.00

Human Glycoprotein 2 (GP2) is present in bile and gallstones in cholangiopathies – has the culprit been caught?
Steffi Lopens (Dahlewitz, Germany)

10.00-10.15

Clinical relevance of antibodies against glycoprotein 2 in identifying patients with Cholangiocarcinoma
Dirk Roggenbuck (Senftenberg, Germany)

10.15-10.30

COFFEE BREAK - POSTER AND EXHIBITION VIEWING

10.30-11.00

11.00-12.50

AUTOANTIBODIES IN PATIENTS WITH SEVERE COVID-19

Co-Chairs: Marvin Fritzler (Calgary, Canada)
Paul Bastard (Paris, France)

11.00-11.30

The autoimmune Covid virus – Induction of over 15 autoantibodies
Yehuda Shoenfeld (Tel Aviv, Israel)

11.30-11.55

Autoantibodies against type I Interferons in patients with severe COVID-19
Paul Bastard (Paris, France)

11.55-12.20

Anti-platelet factor 4 antibodies in patients with thrombotic thrombocytopenia associated with COVID-19 infection or vaccination
Michel Goldman (Brussels, Belgium)

12.20-12.35

Increased protease-activated receptor 1 autoantibodies are associated with severe COVID-19
Florian Tran, A. Scharmacher, H. Grasshoff, K. Sterner, S. Schinke, N. Käding, J.P. Bernardes, N. Mishra, T. Bahmer, J. Franzenburg, B.F. Hoyer, A. Glück, A. Küller, D. Frank, C. Lange, J. Rupp, J. Heyckendorf, K. Gaede, P. Rosenstiel, Y. Shoenfeld, G. Halpert, K. Schulze-Forster, Harald Heidecke, G. Riemekasten, S. Schreiber (Luckenwalde, Germany)

12.35-12.50

Lack of clinical penetrance for severe COVID-19 despite autoantibodies to type I IFNs in Autoimmune-Polyendocrine-Syndrome Type 1 (APS-1).
Olga Staudacher, C. Meisel, B. Akbil, E. Lankes, V.M. Corman, T. Meyer, N. Unterwalder, U. Kölsch, C. Drosten, M.A. Mall, T. Kallinich, D. Schnabel, C. Goffinet, H. von Bernuth (Berlin, Germany)

12.50-14-00

LUNCH BREAK – POSTER AND EXHIBITION VIEWING

12.50-14-00

Posters C1-C18: Guided poster presentation of selected posters (Autoantibodies in organ specific autoimmune diseases) chaired by Thorsten Krieger

14.00-15.30

EASI SYMPOSIUM: AUTOANTIBODIES IN THE DISEASE CRITERIA FOR SYSTEMIC AUTOIMMUNE DISEASES

Co-Chairs: Jan Damoiseaux (Maastricht, The Netherlands)
Manfred Herold (Innsbruck, Austria)

14.00-14.25

Autoantibodies in the disease criteria of RA
Günther Steiner (Vienna, Austria)

Autoantibodies in the disease criteria of HUVS Elena Borzova (Moscow, Russia)	14.25-14.45
Autoantibodies in the disease criteria of SSc <i>Jan Damoiseaux (Maastricht, The Netherlands)</i>	14.45-15.05
Anti-dsDNA autoantibodies in the disease criteria of SLE <i>Maria Infantino (Florence, Italy)</i>	15.05-15.30
COFFEE BREAK	15.30-16.00
SYSTEMIC AUTOIMMUNE DISEASES	16.00-18.05
Co-Chairs: Elena Csernok (Kirchheim, Germany) Martin Aringer (Dresden, Germany)	
International consensus on ANCA testing beyond systemic vasculitis <i>Jan Damoiseaux (Maastricht, The Netherlands)</i>	16.00-16.25
Autoantibody profile in eosinophilic granulomatosis and polyangiitis: predominance of anti-alpha-enolase antibodies <i>Elena Csernok (Kirchheim, Germany)</i>	16.25-16.45
Autoantibody content in circulating immune complexes in lupus nephritis <i>Johan Rönnelid (Uppsala, Sweden)</i>	16.45-17.05
Protein array screening identifies biomarkers for Systemic Lupus Erythematosus (SLE) <i>Franziska Werner (Hennigsdorf, Germany)</i>	17.05-17.20
ACPA detection by haemagglutination using an antibody-based mediator <i>Ilmar C. Kruis, A. van der Heijden, M. Salden, Ger J.M. Pruijn (Nijmegen, The Netherlands)</i>	17.20-17.35
Monoclonal antibody therapy that targets phospholipid-binding protein delays lupus activity in MRL/lpr mice <i>Silviya Bradyanova, Nikolina Mihaylova, Jozsef Prechl, Dobroslav Kyurkchiev, Andrey Tchorbanov (Sofia, Bulgaria)</i>	17.35-17.50
Polyautoimmunity Clusters as a New Taxonomy of Autoimmune Diseases. <i>Manuel Rojas, C. Ramírez-Santana, Y. Acosta-Ampudia, D.M. Monsalve, M. Rodriguez-Jimenez, E. Zapata, A. Naranjo-Pulido, A. Suárez-Avellaneda, L.J. Ríos-Serna, C. Prieto, W. Zambrano-Romero, M.A. Valero, R.D. Mantilla, C. Zhu, Q.-Zhen Li, C.E. Toro-Gutiérrez, G.J. Tobón, Juan-Manuel Anaya (Bogota, Colombia)</i>	17.50-18.05

08.30-10.30

IMMUNE PATHOLOGY IN COVID-19 AND AUTOIMMUNE DISEASES

Co-Chairs: Carlos Casiano (Loma Linda, USA)
Felipe Andrade (Baltimore, USA)

08.30-08.50

IgM anti-ACE-2 autoantibodies with angiocentric pathology in severe COVID-19
Felipe Andrade (Baltimore, USA)

08.50-09.10

Epitope specificity and relevance of antiphospholipid antibodies in patients with COVID-19
Pier Luigi Meroni (Milan, Italy)

09.10-09.30

What makes antibodies against G protein-coupled receptors so special? A novel concept to understand chronic disease
Gabriela Riemekasten (Lübeck, Germany)

09.30-09.50

Pain-inducing autoantibodies
Camilla I. Svensson (Stockholm, Sweden)

09.50-10.05

Defining the DFS70/LEDGF interactome with anti-DFS autoantibodies: potential role of this interactome in SARS-COVID-2 infection
Carlos Casiano (Loma Linda, USA)

10.05-10.20

Protein-engineered molecules carrying GAD65 epitopes and targeting CR1 selectively down-modulates disease-associated human B lymphocytes
Iliyan Manoylov, Gabriela Boneva, Irini Doytchinova, Nikolina Mihaylova, Andrey Tchorbanov (Sofia, Bulgaria)

10.20-10.50

COFFEE BREAK - POSTER AND EXHIBITION VIEWING

10.50-12.30

AUTOIMMUNE SEROLOGY IN CLINICAL PRACTICE

Co-Chairs: Xavier Bossuyt (Leuven, Belgium)
Maria Infantino (Florence, Italy)

10.50-11.15

Likelihood ratio approach and clinical interpretation of lab results
Xavier Bossuyt (Leuven, Belgium)

11.15-11.40

ANCA testing in clinical practice: From implementation to quality control and harmonization
Jan Damoiseaux (Maastricht, The Netherlands)

11.40-12.00

Evaluation of PR3- and MPO-ANCA line and dot immunoassays in ANCA-associated vasculitis
Elena Csernok (Kirchheim, Germany)

Comparison of two methods for the detection of anti-aquaporin-4 and anti-myelin oligodendrocyte glycoprotein antibodies
David Goncalves, M. Poinot, A. Ruiz, L. Benyahya, N. Fabien, R. Marignier (Lyon, France)

12.00-12.15

Routine application of PR3- and MPO-ANCA chemiluminescence immunoassays demonstrates enhanced detection rates.
Joyce van Beers, Jan Damoiseaux, Marloes Jobsen, Cornelia Dähnrich, Alexander Kühnl, Wolfgang Schlumberger (Maastricht, The Netherlands)

12.15-12.30

LUNCH BREAK – POSTER AND EXHIBITION VIEWING

12.30-13.30

BIOMARKER ANALYTIC IN AUTOIMMUNE DISEASES AND SARS-COV-2 INFECTION

13.30-14.30

Co-Chairs: Dirk Reinhold (Magdeburg, Germany)
Thorsten Krieger (Hamburg, Germany)

Circulating Calprotectin and anti-SARS-CoV2 IgG as severity biomarkers in a large cohort of Spanish patients with COVID-19
Gary L. Norman, Juan Irure, Alejandra Comins, Roger Albesa, Adriel Roa, Elena Gonzalez, Michael Mahler, Marcos Lopez Hoyos (San Diego, USA)

Differing levels of CD25 / sIL-2R measured with a novel Phadia assay in sera of hospitalized patients with CoViD-19 may correlate to disease severity
Laura Steller, Johannes Schulte-Pelkum (Freiburg, Germany)

13.45-14.00

Correlation of circulating Calprotectin levels in serum and COVID-19 severity in an Italian cohort
Maria Infantino, Mariangela Manfredi, Maria Grazia Alessio, Giulia Previtali, Valentina Grossi, Maurizio Benucci, Antonio Faraone, Alberto Fortini, Elisa Grifoni, Luca Masotti, Emily Fitz Gerald, Gary Norman, Roger Albesa, Michael Mahler (Florence, Italy)

14.00-14.15

Seroconversion after vaccination with SARS-CoV-2 vector or mRNA vaccines
Dirk Lassner, Talena Jarling (Hennigsdorf, Germany)

14.15-14.30

Dresden Prize Award Ceremony & Conclusion

14.30-15.00

FAREWELL COFFEE BREAK

15.00-16.00

TUESDAY,
SEPTEMBER 07
(12.30) until
FRIDAY,
SEPTEMBER 10
(13.30)

POSTER EXHIBITION

A AUTOANTIBODIES IN SYSTEMIC AUTOIMMUNE DISEASES

A1 Screening of extractable antinuclear antibodies in the diagnosis of connective tissue diseases: evaluation of an update of Phadia/ThermoFisher "EliA Symphony" assay. *Nina Olschowka, Nathalie Bardin, Daniel Bertin (Freiburg, Germany)*

A2 Assessment of classical and novel connective tissue disease markers utilizing a novel multi-analyte assay for the diagnosis of systemic sclerosis on a Spanish cohort. *Odette Viñas, Albert Pérez-Isidro, Sergio Prieto-González, Fernanda Hernández-González, Michael Mahler, Chelsea Bentow, Andrea Seaman, Grace Kim, Vinit Adani, Michelle Amio, Karl Norvell, Mary Ann Aure, Ricard Cervera, Estíbaliz Ruiz-Ortiz, Gerard Espinosa (Barcelona, Spain)*

A3 Clinical evaluation and method comparison of Aptiva CTD essential for the detection of antibodies associated with SLE in a multicenter study. *Andrea Seaman, Marychel Tiongson, Douglas Mackey, Michelle Anne Amio, Albert Pérez-Isidr, Estíbaliz Ruiz-Ortiz, Gerard Espinosa, Roberto Ríos-Garcés, Ricard Cervera, Odette Viñas, Gabriella Morozzi, Danilo Villalta, Michael Mahler (San Diego, USA)*

A4 Meta-Analysis of the diagnostic test specificity of anti-dsDNA testing for Systemic Lupus Erythematosus: Relevance in context of the 2019 EULAR/ACR Classification Criteria and practical Implications. *Michelle E. Orme, Anja Voreck, Redha Aksouh, Veena Joy, Rosalind Ramsey-Goldman, Marco W.J. Schreurs (Rotterdam, The Netherlands)*

A5 Multicenter study investigating the clinical relevance and method comparison of novel assays for the detection of antibodies associated with Sjögren's syndrome. *Andrea Seaman, Michelle Anne Amio, Douglas Mackey, Marychel Tiongson, Charles Warren, Kishore Malyavantham, Gabriella Morozzi, Danilo Villalta, A. Selva-O'Callaghan, Michael Mahler (San Diego, USA)*

A6 Evaluation of anti-SS-A autoantibody concentration as a marker for disease activity in Sjogren's síndrome. *Gábor Nagy, Antónia Szántó, Zsófia Aradi, Beáta Lajszné Tóth, Róza Vargáné Földesi, Gáborné Török, Edit Gyimesi, István Csípő, Péter Antal-Szalmás (Debrecen, Hungary)*

A7 Autoantibodies in Dermatomyositis: Experience from a multi-site evaluation. *Olivia Springfield, Andrea Seaman, Chelsea Bentow, Kishore Malyavantham, Ignacio Garcia-De La Torre, Mónica Vázquez-Del Mercado, Lilia Andrade-Ortega, Eva Balada, M. Angeles Martínez, Albert Selva-O'Callaghan, Thierry Vincent, Alexandre Jentzer, Didier Bessis, Anna Ghirardello, Andrea Doria, Marvin Fritzer, Franco Franceschini, Ilaria Cavazzana, Micaela Fredi, Erminia Garrafa, Michael Mahler (San Diego, USA)*

A8 Myositis specific and novel myositis associated autoantibodies in a cohort of dermatomyositis patients from France. *Olivia Springfield, Thierry Vincent, Andrea Seaman, Chelsea Bentow, Vinit Adani, Grace Kim, Alexandre Jentzer, Didier Bessis, Michael Mahler (San Diego, USA)*

A9 Anti-Zo in routine samples - is there a specific IF-pattern? *Michael L. Grünwald, Kristina Kamp, W. Meyer (Augsburg, Germany)*

A10 Identification of NVL as a novel ANA target in systemic sclerosis. *Zitao Zeng, Ramona Miske, Madeleine Scharf, Yvonne Denno, Christian Probst, Bianca Teegen, Anthonina Ott, Lars Komorowski (Lübeck, Germany)*

A11 Assessment of anti-Carbamylated protein (anti-CarP) antibodies in combination with 14-3-3 eta, rheumatoid factor (RF), and anti-citrullinated protein (anti-CCP3) antibodies in a referral cohort of a large U.S. autoimmune laboratory. *Vincent Ricchiuti, Kelly Y. Chun, Jane M. Yang, Luis Gomez, Michael Mahler (San Diego, USA)*

A12 Pathway analysis of IgG immunoreactivity profiles shows similarities of rheumatoid arthritis autoantibody signatures for human and rat. *Lisa Milchram, Anita Fischer, Jasmin Huber, Klemens Vierlinger, Stephan Blüml, Daniela Sieghart, Günter Steiner, Andreas Weinhäusel (Vienna, Austria)*

A13 Decrease of antigen specific ANAs and composition of cellular subsets predict response to biologic treatment in patients with psoriasis and psoriatic arthritis. *Athanasios Mavropoulos, Eleni Patrikiou, Sotirios Tsiogkas, Christos Liaskos, Lazaros I. Sakkas, Dimitrios P. Bogdanos, Eferpi Zafiriou (Larissa, Greece)*

A14 The induction of autoantibodies related to inflammatory autoimmune rheumatic diseases in COVID-19 mRNA vaccinated healthcare professionals. *Manca Ogrič, Tinka Švec, Polona Žigon, Snežna Sodin Semrl, Saša Čučnik (Ljubljana, Slovenia)*

A15 No evidence for short-term induction of antinuclear antibodies by vaccination with BNT162b2 and mRNA-1273.

Robert Markewitz, Daniela Pauli, Justina Dargvaiene, Katja Steinhagen, Sarah Engel, Victor Herbst, Dorinja Zapf, Christina Krüger, Shahpour Sharifzadeh, Benjamin Schomburg, Frank Leyboldt, Jan Rupp, Siegfried Görg, Ralf Junker, Klaus-Peter Wandinger (Kiel, Germany)

A16 Prognostic value of circulating calprotectin levels on the clinical course of COVID-19 differs between serum, heparin, EDTA and citrate sample types. *Louis Nevejan, Thomas Strypens, Mathias Van Nieuwenhove, An Boel, Lien Cattoir, Peter Meeus, Xavier Bossuyt, Nikolaas De Neve, Lieve Van Hoovels (Aalst, Belgium)*

A17 Antibody reactivity against antigens of helicobacter pylori in patients with psoriatic diseases: relevance to disease pathogenesis. *Eleni Patrikiou, Christos Liaskos, George Efthymiou, Niki Ntavari, Efterpi Zafiriou, Theodora Simopoulou, Thomas Scheper, Wolfgang Meyer, Aggeliki Roussaki-Schulze, Dimitrios P. Bogdanos (Larissa, Greece)*

A18 ANA testing in Austria during SARS-CoV-2 pandemic. *Werner Klotz, Ulrike Demel, Andrea Griesmacher, Jörg Hofmann, Manfred Herold (Vienna, Austria)*

A19 The production of anti-PF4 antibodies in anti-phospholipid antibody positive patients is not affected by COVID-19 vaccination. *Paola A. Lonati, Caterina Bodio, Mariangela Scavone, Giuliana Martini, Elisa Pesce, Alessandra Bandera, Andrea Lombardi, Maria Gerosa, Franco Franceschini, Angela Tincani, Gianmarco Podda, Sergio Abrignani, Renata Grifantini, Marco Cattaneo, Maria Orietta Borghi, Pier Luigi Meroni (Milan, Italy)*

A20 Automated ANA pattern recognition according to ICAP nomenclature - challenges for artificial intelligence. *Rico Hiemann (Senftenberg, Germany)*

A21 PR3-ANCA detected by sensitive ELISA predicts poor survival and correlates with Mayo risk score in primary sclerosing cholangitis. *Dirk Roggenbuck, Malgorzata Milkiewicz, Steffi Lopens, Grit Zarske, Mandy Sowa, Peter Schierack, Dirk Reinhold, Piotr Milkiewicz, Ewa Wunsch (Senftenberg, Germany)*

A22 A novel design of ANCA IFA for simultaneous screening and confirmatory testing. *Charleen Lode, Rico Hiemann, Mandy Sowa, Susann Kuhla, Dirk Roggenbuck (Senftenberg, Germany)*

A23 Extended ANA Line-Immunoassay beyond the detection of standard routine autoantibodies in systemic rheumatic diseases. *Laura Rose, Jana Vukasinovic, Mandy Sowa, Dirk Roggenbuck (Senftenberg, Germany)*

B CANDIDATES FOR THE DRESDEN PRIZE

B1 Using machine learning to improve agreement of automated fluorescence microscope results with digital reading by end user in indirect immunofluorescent assays. *Carolina Auza, Carlos Melus, Andrea Seaman, Michael Mahler (San Diego, USA)*

B2 Slow disease progression and clinical heterogeneity make anti-CASPR2 encephalitis a diagnostic challenge. *Jeanne Benoît, Sergio Muñoz-Castrillo, Anne-Laurie Pinto, Géraldine Picard, Véronique Rogemond, Jérôme Honnorat, Bastien Joubert (Lyon, France)*

B3 Protein array screening identifies biomarkers for Systemic Lupus Erythematosus (SLE). *Franziska Werner (Hennigsdorf, Germany)*

B4 Performance of an indirect immunofluorescence commercial assay for the detection of anti-neuronal antibodies: a prospective study. *David Goncalves, V. Rogemond, S. Closs, A.L. Pinto, G. Picard, N. Fabien, J. Honnorat (Lyon, France)*

B5 Multiplex bead assay for the assessment of IgG antibody titers after COVID-19 vaccination. *Jasmin Huber, Manuela Hofner, Miriam Klausberger, Mark Dürkop, Klemens Vierlinger, Dieter Mitteregger, Herbert Tillhof, Andreas Weinhäusel (Vienna, Austria)*

B6 Clinico-neuropathological spectrum in a large cohort of anti-Drebrin autoantibody positive patients with suspected limbic encephalitis. *Chiara A. Hummel, Delara Kamalizade, Valerie Borger, Theodor Rüber, Rainer Surges, Albert J. Becker, Julika Pitsch (Bonn, Germany)*

B7 Experimentally induced CD8+ T-cell driven limbic encephalitis results in temporal lobe epilepsy with hippocampal sclerosis and chronic seizures. *Delara Kamalizade, Karen M.J. van Loo, Ann-Kathrin Baumgart, Vadym Gnatkovsky, Thoralf Opitz, Rainer Surges, Christian Kurts, Susanne Schoch, Albert J. Becker, Julika Pitsch (Bonn, Germany)*

TUESDAY,
SEPTEMBER 07
(12.30) until
FRIDAY,
SEPTEMBER 10
(13.30)

B8 Lentivirus-mediated generation of autoantigen-overexpressing human cell lines for immunofluorescence-based diagnostics of autoimmune diseases. *Susanne Köhler, S. Kammerer, N. Herzog, C. Schulz, S. George, M. Sowa, N. Röber, K. Conrad, D. Roggenbuck, J.-H. Küpper (Senftenberg, Germany)*

B9 IgG immunoreactivity profiling on high density protein and peptide arrays reveals novel autoantibody signatures for rheumatoid arthritis. *Lisa Milchram, Klemens Vierlinger, Jasmin Huber, Stephan Pabinger, Regina Soldo, Daniela Sieghart, Anita Fischer, Stephan Blüml, Günter Steiner, Andreas Weinhäusel (Vienna, Austria)*

B10 Role of ANA screening in patients with Celiac Disease. *Dante Pio Pallotta, F. Tovoli, A. Giamperoli, A. Granito (Bologna, Italy)*

B11 Ataxia with anti-DNER antibodies: from immunological characterization to new clinical insights. *Elise Peter, Le-Duy Do, Salem Hannoun, Sergio Muñoz-Castrillo, Anne-Laurie Pinto, Naura Chounlamountri, Véronique Rogemond, Géraldine Picard, Alexandra Traverse-Glehen, François Cotton, Virginie Desestret, Jérôme Honnorat, Bastien Joubert (Lyon, France)*

B12 Polyautoimmunity clusters as a new taxonomy of autoimmune diseases. *Manuel Rojas, Carolina Ramírez-Santana, Yeny Acosta-Ampudia, Diana M. Monsalve, Mónica Rodríguez-Jimenez, Elizabeth Zapata, Angie Naranjo-Pulido, Ana Suárez-Avellaneda, Lady J. Ríos-Serna, Carolina Prieto, William Zambrano-Romero, María Alejandra Valero, Rubén D. Mantilla, Chengsong Zhu, Quan-Zhen Li, Carlos Enrique Toro-Gutiérrez, Gabriel J. Tobón, Juan-Manuel Anaya (Bogota, Colombia)*

B13 Mapping the DFS70 interactome using anti-DFS autoantibodies: defining the DFS70/GR/Beta-catenin axis. *Evelyn S. Sanchez-Hernandez, Greisha L. Ortiz-Hernandez, Michael Mahler, Carlos A. Casiano (Loma Linda, USA)*

B14 Enhancing assay standardization: Generation of a customized biomaterial with defined specific activity and levels of anti-tTG and anti-DGP IgA. *Ingrid González, Cristina García, Patricia Rogniat, Laura Martínez-Prat, Erin Miller, Marychel Tiongson, Todd Parker, Andrea Seaman, David Lucia, Michael Mahler (LLica d'Amunt, Spain)*

B15 Lack of clinical penetrance for severe COVID-19 despite autoantibodies to type I IFNs in Autoimmune-Polyendocrine-Syndrome Type 1 (APS-1). *Olga Staudacher, Christian Meisel, Bengisu Akbil, Erwin Lankes, Victor M. Corman, Tim Meyer, Nadine Unterwalder, Uwe Kölsch, Christian Drosten, Marcus A. Mall, Tilmann Kallinich, Dirk Schnabel, Christine Goffinet, Horst von Bernuth (Berlin, Germany)*

C AUTOANTIBODIES IN ORGAN SPECIFIC AUTOIMMUNE DISEASES

C1 Detection of anti-AK5 autoantibodies in patients with limbic encephalitis in indirect immunofluorescence assay and line blot. *Ramona Miske, Swantje Mindorf, Anthonina Ott, Kathrin Borowski, Dominik Jäger, Jérôme Honnorat, Andrew McKeon, Christian Probst, Lars Komorowski (Lübeck, Germany)*

C2 Parallel detection of antibodies against CDR2L and CDR2 increases the diagnostic specificity in serological diagnostics of paraneoplastic cerebellar degeneration. *Anthonina Ott, Madeleine Scharf, Ramona Miske, Dominik Jäger, Jérôme Honnorat, Lars Komorowski, Thomas Scheper, Wolfgang Meyer (Lübeck, Germany)*

C3 Strategy for the detection of anti-septin antibodies by indirect immunofluorescence assay. *Madeleine Scharf, Ramona Miske, Yvonne Denno, Christian Probst, Dominik Jäger, Kathrin Borowski, Bianca Teegen, Lars Komorowski (Lübeck, Germany)*

C4 Novel fully automated immunoassay for the diagnosis of anti-IA-2 autoantibodies in type 1 diabetes. *Daniel Filchtinski, Johannes Schulte-Pelkum (Freiburg, Germany)*

C5 Novel fully automated immunoassay for the diagnosis of anti-GAD65 autoantibodies in type 1 diabetes. *Daniel Filchtinski, Johannes Schulte-Pelkum (Freiburg, Germany)*

C6 Selective silencing of disease-associated B and T lymphocytes by chimeric molecules in humanized NSG murine model of Hashimoto's thyroiditis. *Nikola Ralchev, Aleksandar Markovski, Nikolina Mihaylova, Irini Doytchinova, Alexander Shinkov, Andrey Tchorbanov (Sofia, Bulgaria)*

C7 Cell-based immunofluorescence test applying recombinant laminin 332 for serological diagnostics of pemphigoid. *Stephanie Goletz, Christian Probst, Lars Komorowski, Wolfgang Schlumberger, Detlef Zillikens, Winfried Stöcker, Enno Schmidt (Lübeck, Germany)*

TUESDAY,
SEPTEMBER 07
(12.30) until
FRIDAY,
SEPTEMBER 10
(13.30)

C8 Comparison of different assays for serum anti-type VII collagen reactivity of patients with epidermolysis bullosa acquisita. *M.M. Holtsche, N. van Beek, T. Hashimoto, G. Di Zenzo, D. Zillikens, C. Prost-Squarcioni, M. Titeux, A. Hovnanian, E. Schmidt, Stephanie Goletz (Lübeck, Germany)*

C9 Relevance of anti-PLA2R levels in therapy decision and prediction of therapy outcome using cyclophosphamide and steroids treatment in patients with membranous nephropathy. *Coralien Vink, Anne-Els van de Logt, Alexander Kühnl, Cornelia Dähnrich, Wolfgang Schlumberger, Jack Wetzels (Lübeck, Germany)*

C10 Detection of conventional and novel autoimmune liver antibodies, including hexokinase 1 and KLHL12 (KL-p) by particle-based multi-analyte technology in a French cohort of patients with primary biliary cholangitis. *Gary L. Norman, Eric Ballot, Yannick Chantran, Simone Choi, Carolina Auza, Erika Aron, Silvia Casas, Chelsea Bentow, Andrea Seaman, Kishore Malyavantham, Charles Warren, Marychel Tiongson, Michael Mahler, Catherine Johanet (San Diego, USA)*

C11 Novel chemiluminescence immunoassays for serological diagnostics of coeliac disease. *Danilo Villalta, Maria Grazia Alessio, Giulia Previtali, Maria Infantino, Mariangela Manfredi, Lisa Agatea, Enrico Favaro, Alexander Kühnl, Cornelia Dähnrich, Wolfgang Schlumberger (Lübeck, Germany)*

C12 Celiac disease-associated autoantibody profile of samples with discordant tissue transglutaminase and endomysial IgA antibody results from laboratory routine screening. *Mary Ann Aure, Maria Infantino, Mariangela Manfredi, Chelsea Bentow, Vinit Adani, Andrea Seaman, Gary L. Norman, Michael Mahler (San Diego, USA)*

C13 Clinical performance of non-invasive diagnostic strategies on Celiac disease cohorts utilizing the novel particle-based multi-analyte technology: results of a multi-center study. *Marcos Lopez Hoyos, Juan Irure, Mary Ann Aure, Maria Grazia Alessio, Giulia Previtali, Andrea Seaman, Edward Wahl, Daniel Leffler, Chris Mulder, Maria Papp, Chelsea Bentow, Gary L. Norman, Michael Mahler (San Diego, USA)*

C14 Necessity of harmonization of tissue transglutaminase IgA antibody tests to align clinical decision making in Coeliac Disease. *Louis Nevejan, Pieter Dobbels, Xavier Bossuyt, Lieve Van Hoovels (Aalst, Belgium)*

C15 A new chemiluminescence immunoassay for the detection of faecal calprotectin. *Maria Grazia Alessio, Giulia Previtali, Lisa Agatea, Enrico Favaro, Piera de Gaspari, Piero Novel, Alessandro Confettura, Benjamin Dilberger, Anika Wenderoth, Victor Herbst (Lübeck, Germany)*

C16 Pre-analytical recommendations and reference values for circulating calprotectin are sample type and assay dependent. *Louis Nevejan, Marnix Mylemans, Bert Vander Cruyssen, Muriel Stubbe, Stefanie Van Den Bremt, Laura Hofman, Maria Infantino, Xavier Bossuyt, Lieve Van Hoovels (Aalst, Belgium)*

C17 Circulating calprotectin as a predictive and severity biomarker in patients with COVID-19. *Gary L. Norman, Sherwin A. Navaz, Yogendra Kanthi, Roger Albasa, Michael Mahler, Jason S. Knight, Yu Zuo (San Diego, USA)*

C18 Autoimmunity without autoantibodies: Facets of autoimmune disease in a cohort of distinct inborn errors of immunity. *Julia Körholz, M. Bienias, C. Kastl, M. Niemuth, F. Taube, J. Roesler, M. Laaß, C. Vogelberg, B. Mayer, N. Röber, K. Conrad, Catharina Schuetz (Dresden, Germany)*

The following companies participate in the industrial exhibition and/or have made a generous sponsorship (in alphabetical order):

- Booth 11** **AID Autoimmun Diagnostika GmbH**
(Strassberg, Germany)
www.aid-diagnostika.com
- Booth 3** **AIT Austrian Institute of Technology GmbH**
(Vienna, Austria)
www.ait.ac.at
- biosaxony e.V.**
(Dresden, Germany)
www.biosaxony.com
- Bio-Rad Laboratories, Inc.**
(Benicia, USA)
www.bio-rad.com
- Booth 15** **BmT GmbH - One Lambda ThermoFisher Scientific**
(Meerbusch, Germany)
www.bmt.de
- Booth 9** **BÜHLMANN Laboratories AG**
(Schönenbuch, Switzerland)
www.buhlmannlabs.ch
- Diarect GmbH - Part of BBI Solutions**
(Freiburg, Germany)
www.diarect.com
- DLD Diagnostika GmbH**
(Hamburg, Germany)
www.dld-diagnostika.de
- Booth 12** **D-tek s.a.**
(Mons, Belgium)
www.d-tek.be
- Booth 16** **EUROIMMUN Medizinische Labordiagnostika AG**
(Lübeck, Germany)
www.euroimmun.de
- Booth 8** **GA Generic Assays GmbH**
(Dahlewitz, Germany)
www.genericassays.com

Human Gesellschaft für Biochemica und Diagnostica mbH

(Wiesbaden, Germany)
www.human.de

Booth 10

Immundiagnostik AG

(Bensheim, Germany)
www.immundiagnostik.com

Booth 4

in.vent Diagnostica GmbH

(Hennigsdorf, Germany)
<https://inventdiagnostica.de>

Booth 1

medac GmbH

(Wedel, Germany)
www.medac.de

Booth 7

PEPPERPRINT GmbH

(Heidelberg, Germany)
www.pepperprint.com

Booth 5

TestLine Clinical Diagnostics Ltd.

(Brno, Czech Republic)
www.testlinecd.com

Booth 2

The Binding Site GmbH

(Schwetzingen, Germany)
www.bindingsite.com

ThermoFisher Scientific, Phadia AB

(Uppsala, Sweden)
www.phadia.com

Booth 13

Viramed Biotech AG

(Planegg, Germany)
www.viramed.de

Booth 6

Werfen

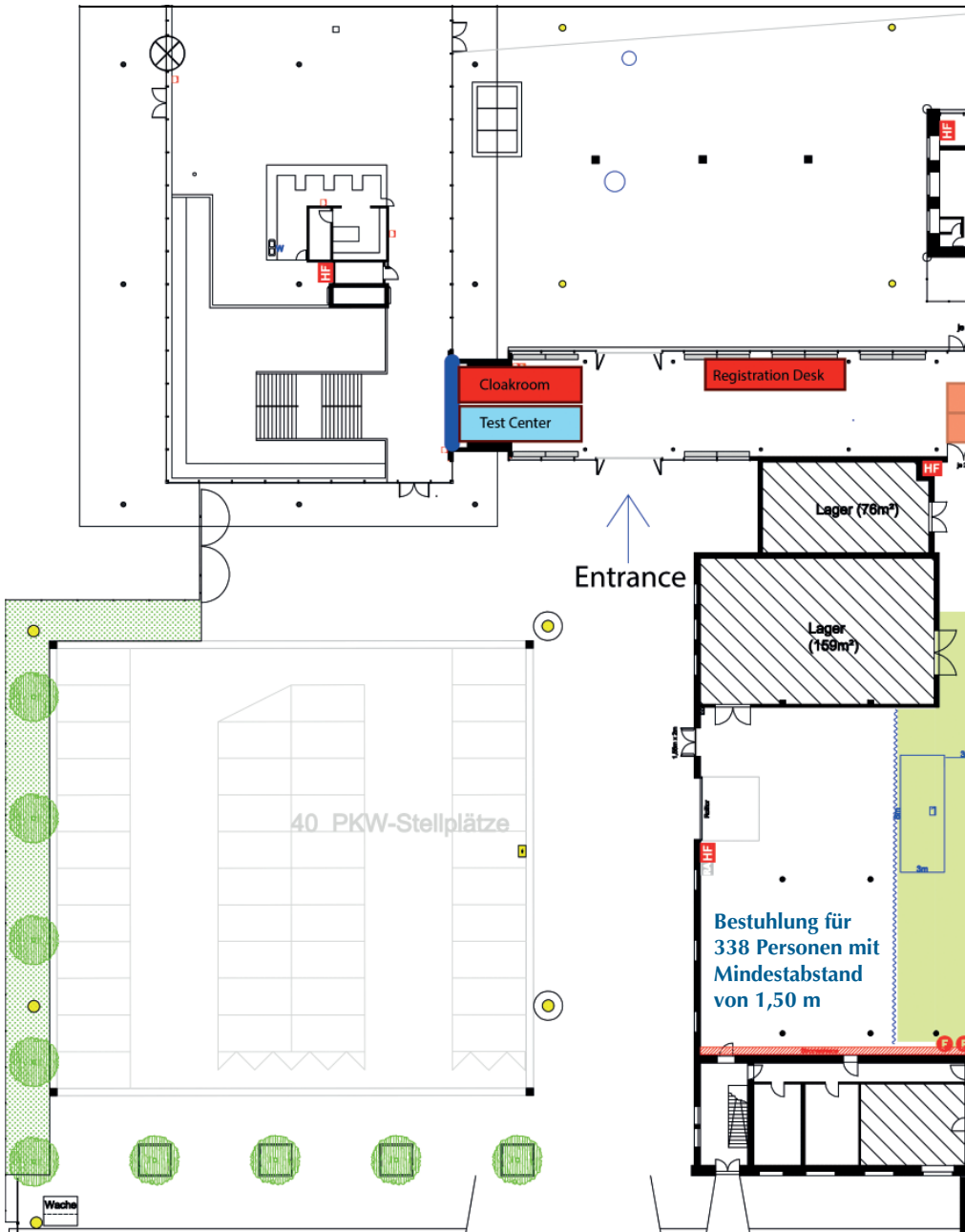
(San Diego, USA)
www.werfen.com

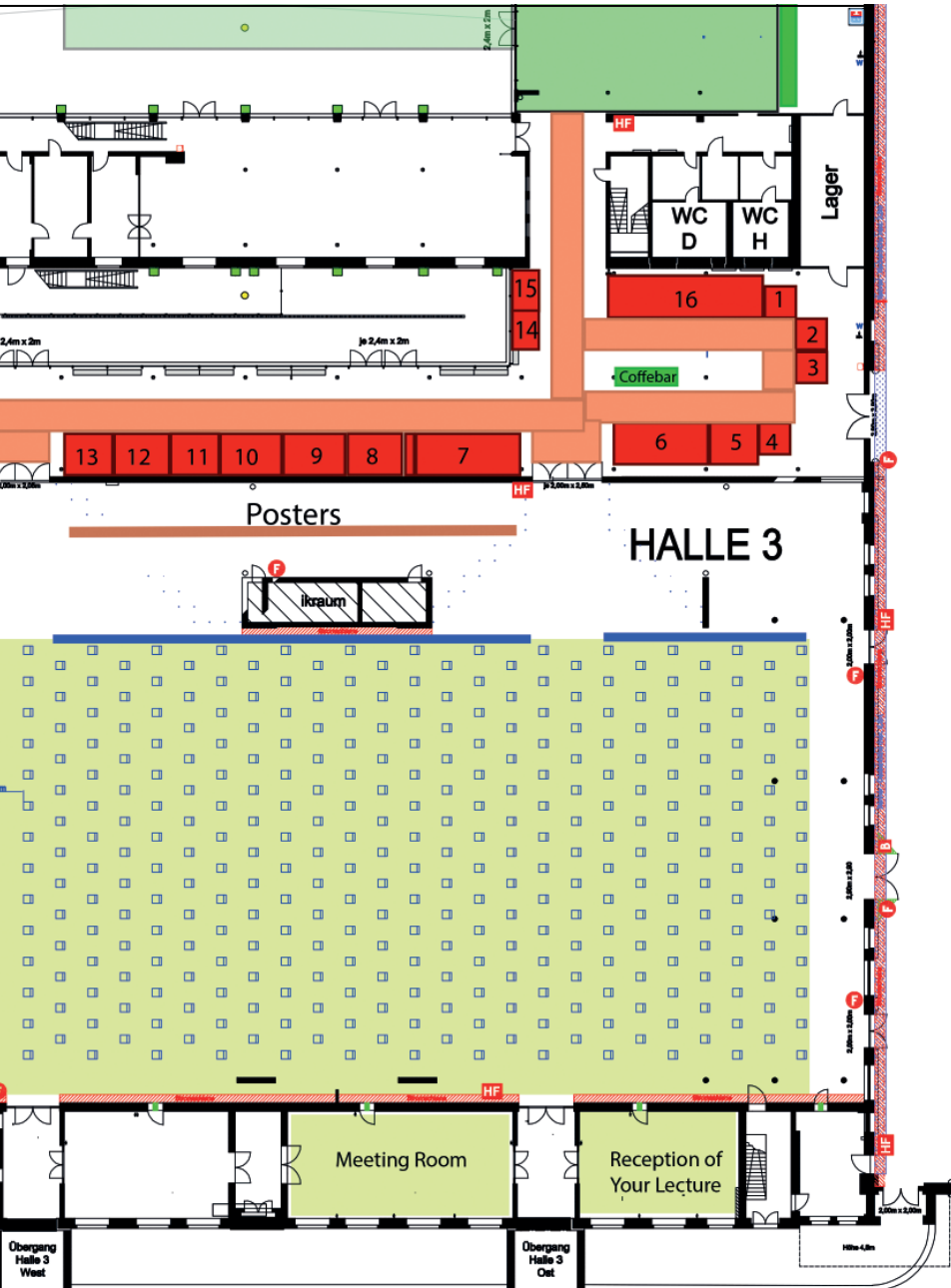
Zellkraftwerk GmbH – A Canopy Company (Part of Bruker)

(Leipzig, Germany)
www.zellkraftwerk.com

Booth 14

We thank these companies for helping to make this symposium successful.





Social programme

Tuesday,
September 07, 2021
18.00-22.00

Get together in the Industrial Exhibition of Congress Venue
(with traditional and vegetarian barbecue in the patio)

Wednesday,
September 08, 2021

Social Dinner in the Johanneum Palais (Dresden Transport Museum) at the Neumarkt, Augustusstrasse 1. The Transport Museum was founded after the Second World War in 1952. However, its roots can be traced back to 1877, when the collection that later became the Saxon Railway Museum (from 1902) was started. Today, the Transport Museum brings together exhibitions on the four branches of transport under one roof: road, rail, air and water. Here you can see among other things the only original replica of the "Saxonia", the first fully functioning German locomotive, which was built in 1839 by the Dresden mastermind Johann Andreas Schubert.
(www.verkehrsmuseum-dresden.de).

18.40 Departure by shuttle bus from the congress venue (Dresden Fair)

19.00 Social Dinner (no formal dress code)

19.30-21.30 Individual visit of the exhibition rooms

22.00 Return by bus to the congress venue (Dresden Fair) and InterCity hotel

GREEN CONGRESS

Environmental protection and sustainability are important to us. The Dresden Symposium on Autoantibodies is a **Green Congress**. For short transportation distances, we are **only** working with local partners: catering, event technology and event equipment, local printing house, local security and cleaning companies. We have also managed to establish a mostly paperless congress organization. Furthermore, during the congress we use small reusable badges without lanyards and reusable long-life conference (cotton) bags. Our caterer only utilizes reusable porcelain tableware, glasses and cutlery, reusable and returnable glass bottle as well as linen tablecloths. The symposium waste is separated.

You can help us protect the environment: Use public transport instead of a car! You will get **free tickets** for city transportation at the congress desk. Local transport information and timetables please find at <https://www.dvb.de/en-gb/>

Chairman

Co-Chairmen

Karsten Conrad, Germany

Luis E.C. Andrade, Brazil
Edward K.L. Chan, USA
Jan Damoiseaux, The Netherlands
Marvin Fritzler, Canada
Ger J. M. Pruijn, The Netherlands
Günter Steiner, Austria

Yehuda Shoenfeld, Israel

Martin Blüthner, Germany
Dimitrios P. Bogdanos, Greece
Xavier Bossuyt, Belgium
Carlos A. Casiano, USA
Elena Csernok, Germany
Manfred Herold, Austria
Pier Luigi Meroni, Italy
Carlos Alberto von Mühlen, Brazil
Johan Rönnelid, Sweden

Michal Mahler, Werfen
Nina Olschowka, Phadia GmbH,
Dirk Roggenbuck, GA Generic Assays GmbH
Wolfgang Schlumberger, EUROIMMUN Medizinische
Labordiagnostika AG

Rico Hiemann
Thorsten Krieger
Ulrich Sack
Werner Schöblier
Clemens August Schulze Lohoff
Andreas Schwab
(Members of the Advisory Committee of the GFID e.V.)
Axel Roers
(Director of the Institut of Immunology, Medical Faculty of the
Technical University Dresden)

Honorary Chair

**International
Advisory Board**

Industrial Board

**National Organizing
Committee**

GENERAL INFORMATION

Symposium Venue/ Workshop Venue

Address of the symposium and workshop venue:
Messe Dresden (Dresden Fair)
Messering 6, Tor (portal) 3
01067 Dresden

Registration office

September 06: 09.00 – 18.00 (only for workshop participants!)
September 07: 08.00 – 22.00
September 08: 08.00 – 18.30
September 09: 08.00 – 18.30
September 10: 08.00 – 17.00

Phone on site

+49 160 98 35 87 47 and +49 351 44 58 222

Language

English, no simultaneous translation

Organization (Registration, Reservation, Exhibition)

Dr. Silke Zwjatkow
GFID e.V.
Wasastraße 14
01219 Dresden, Germany
Phone +49 351 26 32 279
Fax +49 351 26 32 280
e-mail: gfid.ev@me.com

Registration fee (on site)

Participants	EUR 650
GFID members	EUR 630
Students/Residents	EUR 320
ICAP/IAS Workshops	EUR 200
One day ticket	EUR 220

(includes unlimited access to all scientific sessions, welcome reception, industrial exhibition, one copy of the conference abstract ebook)

Members of the Dresden University are free of charge.

Credit Points

The Saxon State Medical Chamber rated the event with a total of **41 credit points**.

Good bye!

See you at the 16th Dresden Symposium on Autoantibodies

2023



Society for the Advancement of Immunodiagnostics

In September of 2002, Dr. Karsten Conrad and colleagues founded the “Society for the Advancement of Immunodiagnostics” (Gesellschaft zur Förderung der Immundiagnostik - GFID e.V.). Through its work the society wants to contribute to help patients with immunologically caused diseases receive an early diagnosis and adequate treatment - especially through the publication of specialized literature and the organization of scientific meetings and workshops. Highlights are the biennial Dresden Symposia on Autoantibodies.

To be able to continue our non-profit work in the future, we would highly appreciate your support in searching funding and sponsoring opportunities.

www.gfid-ev.de

GFID E.V.

Ostsächsische Sparkasse Dresden

IBAN: DE63 8505 0300 3120 0593 57

BIC (SWIFT): OSDDDE81XXX



Lead your lab to the forefront

Aptiva[®]
Multi-Analyte System

Aptiva gives you the power to move your clinicians and your laboratory forward

Increase diagnostic confidence by offering clinicians the most comprehensive Autoimmune test menu and improved clinical performance

Improve diagnostic accuracy by helping to close the seronegative gap with clinically significant, novel biomarkers

Increase efficiency of your lab by improving resource utilization and realizing the full potential of multi-analyte testing with advanced automation

Visit us at booth #6

www.werfen.com
San Diego CA 92131 USA
+1 858-586-9900

Aptiva is a registered trademark of Inova Diagnostics, Inc.
© 2021 Inova Diagnostics, Inc. All rights reserved.

690739 August 2021 Rev.0

werfen